

Manitoba
Department of Mines and Natural Resources
MINES BRANCH

THE CORRESPONDING SHEET OF THE NATIONAL TOPOGRAPHIC SERIES IS 64 C/14

Map No. 1

LEGEND

PRECAMBRIAN

- 22 Quartz-feldspar porphyry; quartz porphyry; felsite.
19 Coarse alaskitic granite; pegmatite. Probably of the same age as 11 and 12.

SICKLE SERIES

- 13 Conglomerate.

UNCONFORMITY

- 12 Pink to buff hornblende-biotite granite and granodiorite.
11 Grey hornblende-biotite tonalite, massive and gneissic.
10 Grey hornblende-biotite diorite and quartz diorite.
9 Gabbro, norite, hornblendite.

WASEKWAN SERIES

- 7 Tuff, agglomerate, breccia. Some minor interbedded sedimentary rocks.
5 Amphibolite derived from andesite and basalt; minor amounts of interbedded sediments and pyroclastics. Minor interbedded siliceous lavas.
4 Mainly impure quartzite; small amounts of greywacke and pyroclastics.
3 Interbedded volcanic, sedimentary and/or tuffaceous rocks.
2 Greywacke, quartzite and derived quartz-feldspar-biotite gneisses and schists. Some undifferentiated pyroclastics. (Includes minor amounts of banded iron formation northeast of Ralph and Barbara Lakes.)

SYMBOLS

- Geological boundary approximate assumed doubtful
Outcrop, or area of small outcrops
Strike and dip of bedding inclined vertical top known overturned Dip not reported
Strike and dip of schistosity or foliation inclined vertical Dip not reported
Trace of axial plane: syncline, anticline
Shear zone or fault, with direction of motion and plunge of linear features. known assumed
Strike and dip of jointing inclined vertical horizontal
Plunge of linear feature.
Drag fold, with plunge of axis and sense of relative motion
Glacial Striae
Esker
Prospect pit, or trench
Anomalous magnetic declination
Rapids, Falls and portage (with length)
Swamp or open muskeg
Centre of aerial photograph
Area of mixed or hybrid rocks
Shaft
Rock or island
Winter road
Road or street
Floatplane base
Unofficial lake names in local use are shown in parenthesis.

Geology by
G. C. MILLIGAN, 1957
Compiled from the field work of:
J. D. ALLAN, 1946, 1947, 1949
J. D. BATEMAN, 1941

Supplemented by the reports and maps of exploration and mining companies now, or formerly, active in the area.
(South of the line Motriuk Lake-Stick Lake, the map is based almost completely upon company reports.)

To accompany Publ. 57-1

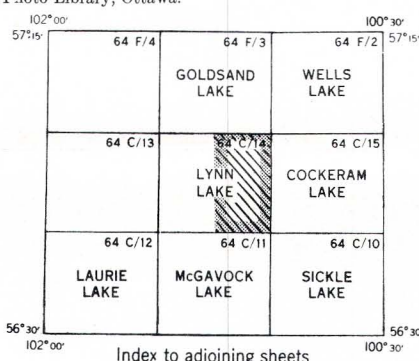
Note: The diorite body shown on the railway at the south edge of the sheet is based on a company report of 1947. Other information available suggests that it may be a recrystallized flow.

Magnetic declination approximately 17 degrees 21 minutes east at west edge of sheet, 1950; decreasing 6 minutes annually.

Aerial photographs numbered:

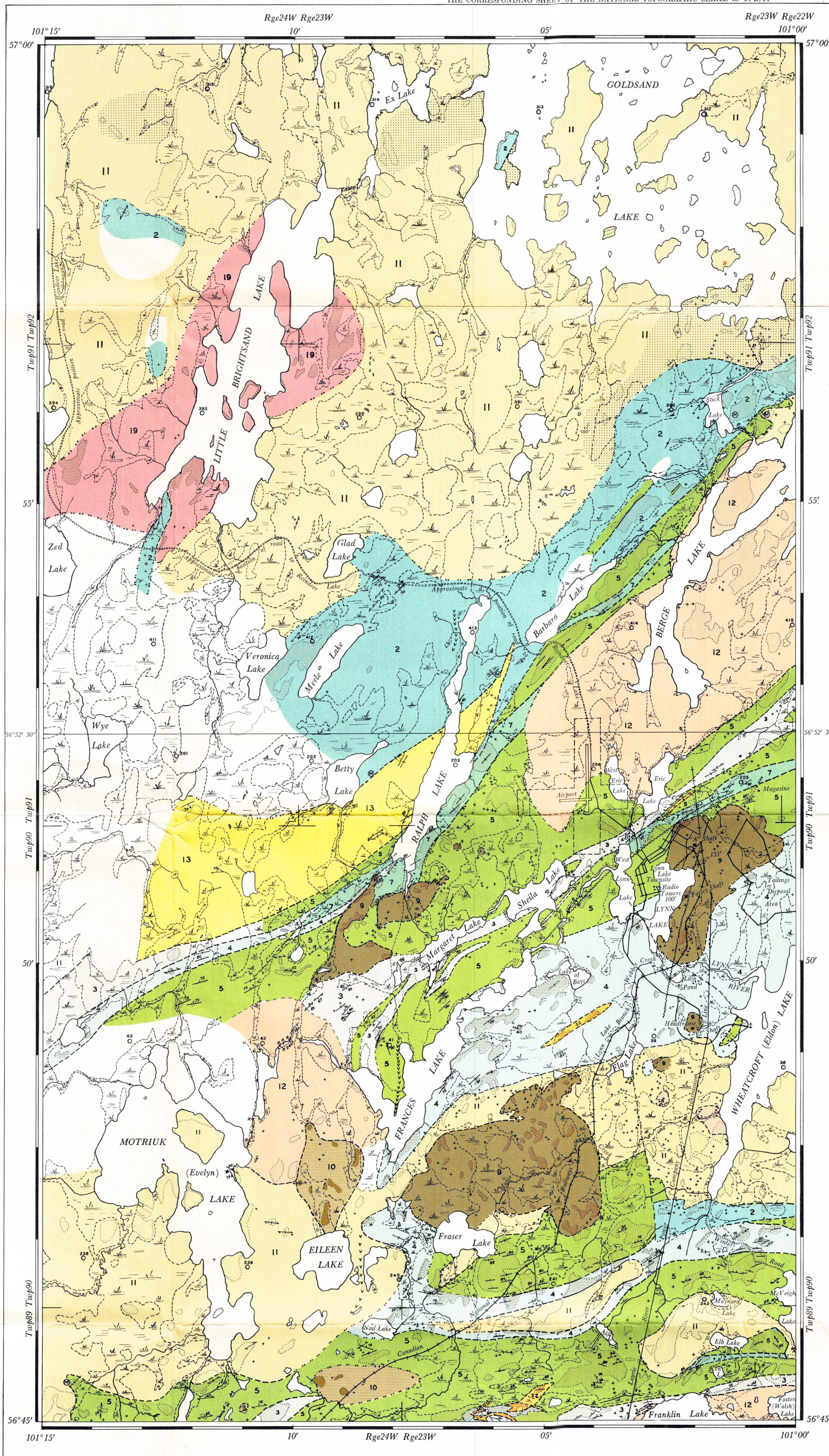
A10934:	311-316;	
A10947:	395-389;	410-415;
A11064:	237-243;	209-215;
A11328:	37-44;	

provide complete stereographic coverage of this area, and are available from the National Air Photo Library, Ottawa.



Index to adjoining sheets

Base map compiled from aerial photographs taken by the Royal Canadian Air Force in 1947, and from surveys by the Department of the Interior, Canada, and the Province of Manitoba.



LYNN LAKE
GRANVILLE LAKE MINING DIVISION

